



# Personal Protective Equipment



**Safety Is Our Only Focus®**

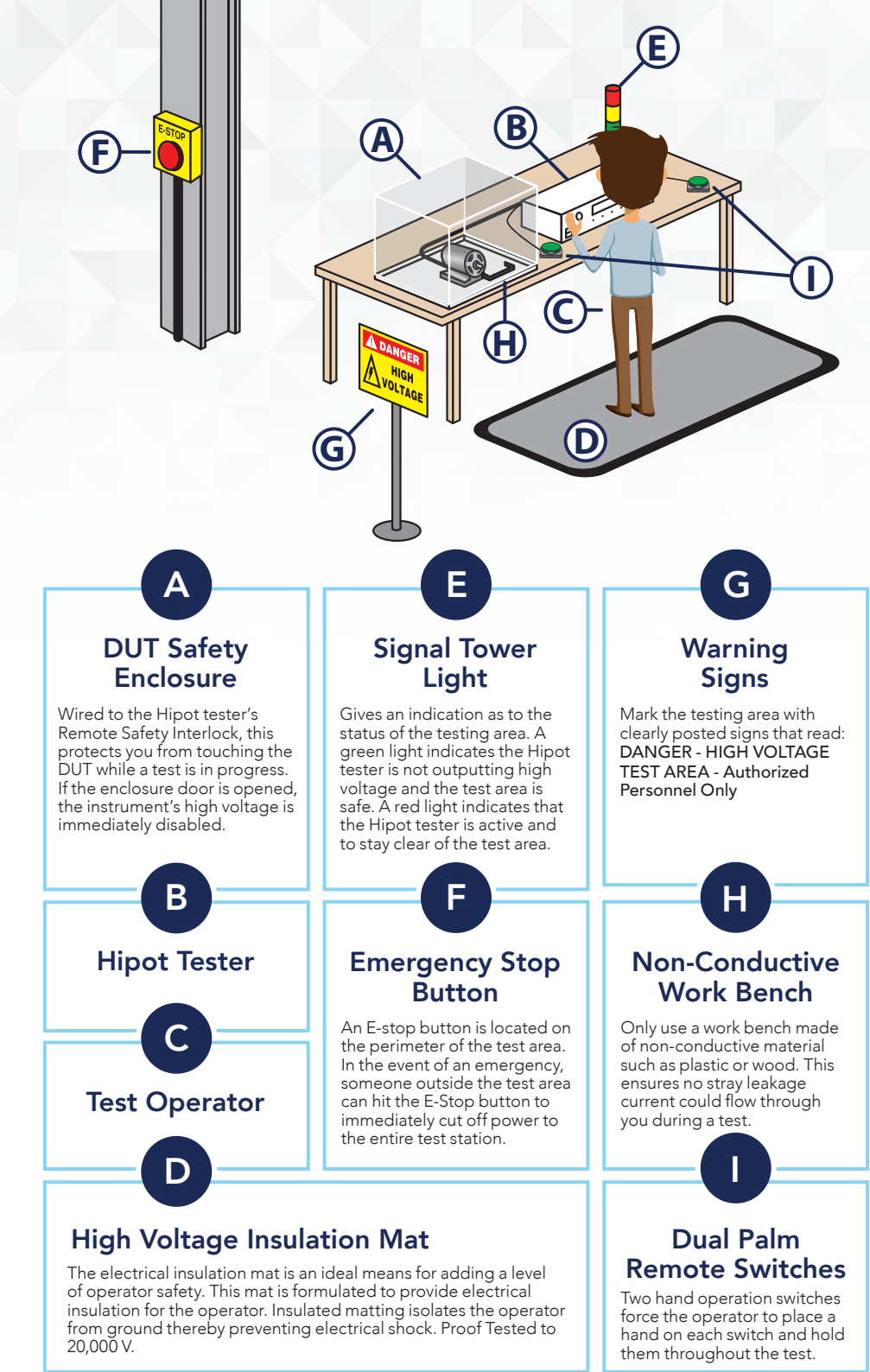
13860 West Laurel Drive in Lake Forest, IL • +1-847-367-4077 • [arisafety.com](http://arisafety.com)

# Increase safety with OSHA required Personal Protective Equipment

Safety is our only focus and as your trusted partner we want to help ensure your safety. We recognize that your employees are your best asset and we want to help keep them safe. That is why we offer a complete line of Personal Protection Equipment (PPE) designed to protect your operators and limit their exposure to dangerous high voltage.



Ensure Operator Safety with Our Wide Selection  
of Personal Protective Equipment





## PPE Safe Workstation Packages

Your safety is important to us and that is why we designed our PPE Safe Workstation Packages to incorporate best practices for a safe workstation. We want to provide an easy solution to install PPE in your application. Simply choose the package that fits best with your workstation.



### PPE Select Package P/N 39865

Our PPE Select package isolates the operator from ground while providing a method of remote test start. The Dual Palm Remote greatly reduces the opportunity for an operator to come into contact while a test is running.

Package includes: Dual Palm Remote Switches, Warning Sign, and Insulation Mat.

### PPE Plus Package P/N 39564

Our PPE Plus package isolates the operator from ground while providing a method of remote start. With the Signal Tower Light installed it is clear to all personnel that a test is running.

Package includes: Remote Test Box, Signal Tower Light, and Insulation Mat.



### PPE Premium Package P/N 39565

Our PPE Premium package isolates the operator from ground. The use of an interlocked DUT enclosure is a best practice as it completely eliminates the opportunity for a test operator to come into contact with the DUT while a test is running.

Package includes: DUT Enclosure, Warning Sign, and Insulation Mat.



## PPE Accessories

We offer a variety of PPE accessories all designed to increase the safety of your workstation. Here is our complete offering.

### DUT Enclosures

#### WHY IS THIS SAFE?

The DUT Enclosure is designed with a safety interlock that will eliminate the potential for electrical shock when used correctly. The interlock will disable the high voltage if the enclosure door is open.

Compatible Models: All models except SC6540



P/N 39067



P/N 39656

### Insulation Mat

P/N 39539

#### WHY IS THIS SAFE?

The mat ISOLATES the operator from ground while testing, which greatly mitigates the shock hazard.

Compatible Models: All models



### High Voltage Warning Sign

P/N 39538

#### WHY IS THIS SAFE?

The sign calls your attention to items or operations that could be dangerous to you and other personnel operating the equipment.

Compatible Models: All models



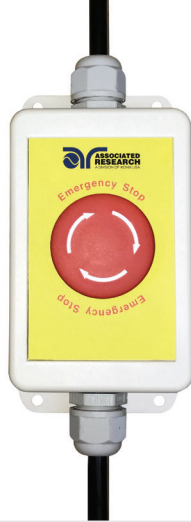
## Emergency Stop Button

ESTOP

### WHY IS THIS SAFE?

The E-Stop provides the safest and fastest way for a rescuer to save an operator from injury by immediately stopping the flow of electric current from a safe distance.

**Compatible Models:** 3130, 314x, 3705, 3765, 3770, 77xx, 7804, 7820, 7850, 820x



## Dual Palm Remote Switch

P/N DPR-01

### WHY IS THIS SAFE?

This does NOT allow the operator to touch the DUT as their hands must remain on the test switches during the test.

**Compatible Models:** 76xx\*, 78xx, 81xx\*, 82xx\*  
\*Requires activation of Dual Remote Switch enable option



## Remote Test Box

RTB-01

### WHY IS THIS SAFE?

Allows for remote operation and maintains a safe distance between the operator and test instrument when starting and resetting a test.

**Compatible Models:** All models except SC6540



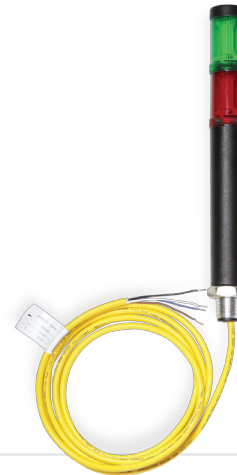
## Red/Green Signal Tower Light

P/N 39560

### WHY IS THIS SAFE?

Mounted lights warn operators in the nearby area to the status of a Hipot test and if the tester is outputting high voltage.

**Compatible Models:** All models



## Remote Test Box with LED Indicators, CE Listed

RTB-02

### WHY IS THIS SAFE?

Allows for remote operation and maintains a safe distance between the operator and test instrument when starting and resetting a test.

**Compatible Models:** All models except SC6540

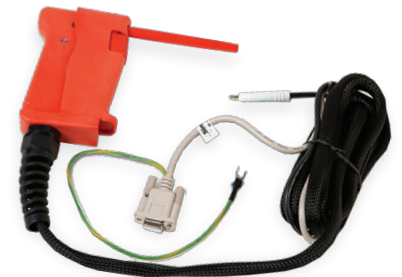


## Dual Action Trigger Test Probe - 10' P/N 38814

### WHY IS THIS SAFE?

In applications that require a test probe, the dual action trigger on the probe ensures that High Voltage is only applied when the test operator holds the probe securely to the DUT. It eliminates the potential for a second operator accidentally activating the test probe.

**Compatible Models:** 36xx, 37xx, 4500D, 76xx, 7700, 7704, 78xx, 810xx, 82xx  
P/N 38815 (20') **Compatible Models:** 36xx, 37xx, 4500D, 76xx, 7700, 7704, 78xx, 810xx, 82xx



## Remote Trigger Foot Switch

P/N 35822

### WHY IS THIS SAFE?

Allows for remote operation and maintains a safe distance between the operator and test instrument when starting and resetting a test.



**Compatible Models:** 4500D, 37xx, 76xx, 77xx, 78xx, 810x, 82xx

## High Current Probe with Lemo Connector - 10' P/N 38084



**Compatible Models:** 3130, 7704

## 40 Amp High Current Probe 4-Wire - 10' P/N 38538



**Compatible Models:** 314x, 8104, 82x4

### WHY ARE THESE SAFE?

In applications that require a test probe, the test button on the probe ensures that High Current is only applied when the test operator holds the probe securely to the DUT. It eliminates the potential for a second operator accidentally activating the test probe.