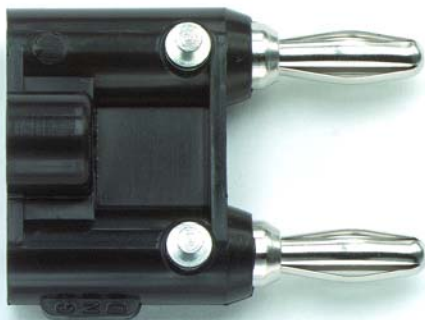
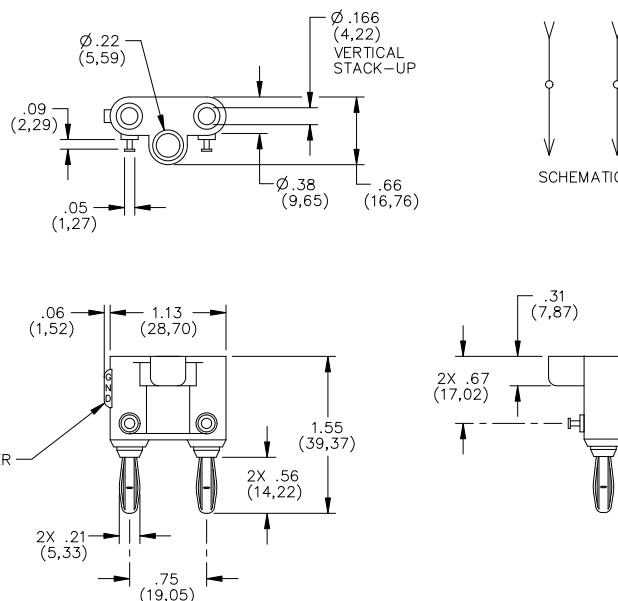


## Model MDP-ST Double Banana Plug with Solder Turret Terminals



**Model MDP-ST**  
**Double Banana Plug with Solder Turret Terminals**



### Features

- Simplified attachment of cables or small components by means of solder turrets.
- For test versatility, banana plugs can be vertically stacked to the banana plug.
- Banana plug spring is Beryllium Copper for long insertion life.

### Materials

Banana Plug: Body – Brass, Nickel Plated  
Spring – Beryllium Copper, Nickel Plated

Insulation: Polypropylene, Color: Black

Marking: "MDP-ST", "POMONA ELECTRONICS CO, INC. POMONA, CALIF."

### Ratings

Operating Temperature: +55°C. (+122°F.) Max.

Operating Voltage: Hand-held testing: 30 VAC/60 VDC Max.

Hands free testing in controlled voltage environments: 5000 WVDC.

Current: 15 Amps

### Ordering Information

Model: MDP-ST

Color option is black only

Distribuido Por:  
www.finaltest.com.mx  
Calle del Eban #16625  
Tijuana B.C. Mexico  
Tel. (664)681-1130  
Tel. 01800 027-4848  
ventas@final-test.net

**FINAL TEST**  
Venta de Instrumentos de Prueba y Medición

All dimensions are in inches. Tolerances (except noted): .xx = ±.02" (.51 mm), .xxx = ±.005" (.127 mm). All specifications are to the latest revisions. Specifications are subject to change without notice. Registered trademarks are the property of their respective companies.