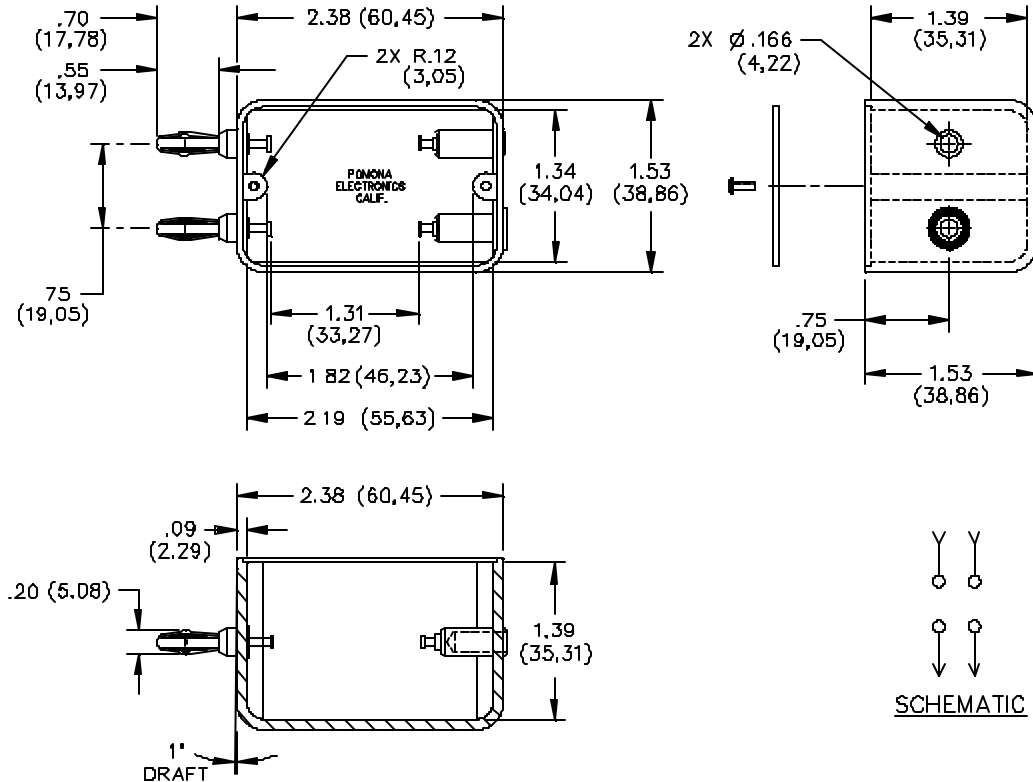


Model 2224 Phenolic Box Component Mounting Banana Jack To Double Plug

Operating Temperature: +150°C. (+302°F.) Max.



MATERIALS:

Banana Plug Springs: Beryllium Copper
 Finish: Nickel plated
 Polarity Marker: Color: Red
 Banana Plug Bodies, Solder Turret Terminals and
 Banana Jacks: Brass, Alloy 360 ½ Hard.
 Finish: Bright tin plated
 Molded Housing: Electrical grade phenolic. Color:
 Black
 Marking: "MODEL 2224 POMONA
 ELECTRONICS CALIF."
 Screws: 2 Ea.. #2-56 x (3/16") P. Head – Steel
 Cover: Phenolic Plate. Color: Black

ORDERING INFORMATION: Model 2224

RATINGS:

All dimensions are in inches. Tolerances (except noted): .xx = ±.02" (.51 mm), .xxx = ±.005" (.127 mm).
 All specifications are to the latest revisions. Specifications are subject to change without notice.
 Registered trademarks are the property of their respective companies. Made in USA

Distribuido Por:
 www.finaltest.com.mx
 Calle del Ebanó #16625
 Tijuana B.C. Mexico
 Tel. (664)681-1130
 Tel. 01800 027-4848
 ventas@final-test.net