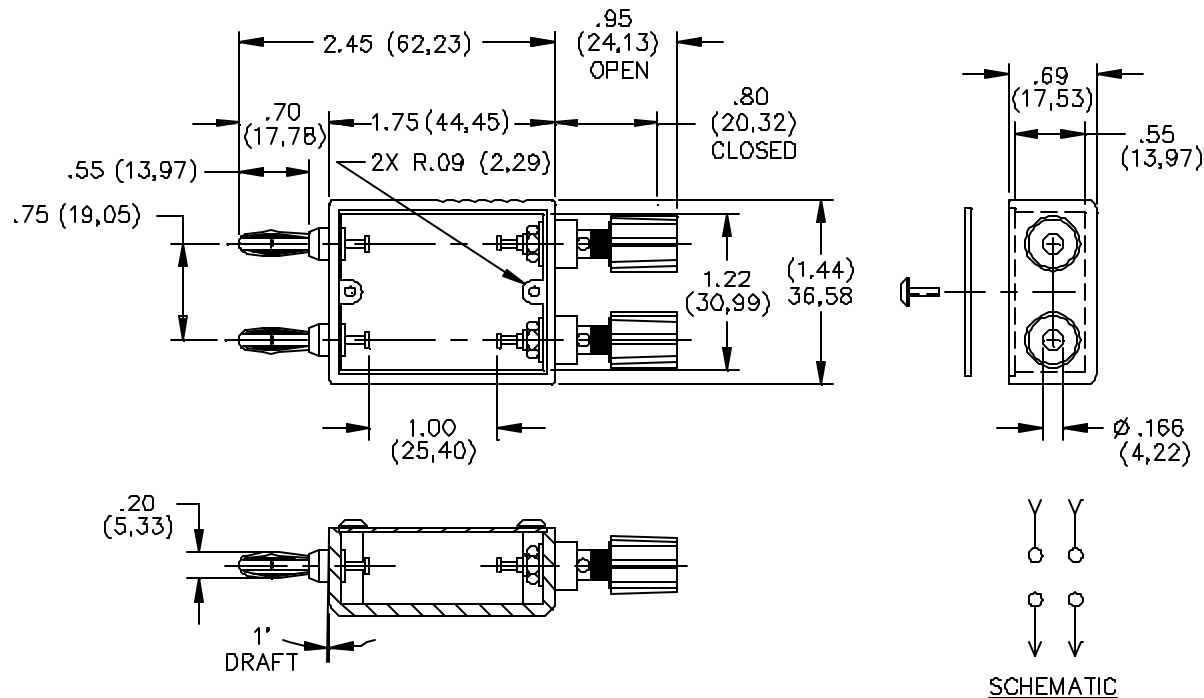


Model 2259 Phenolic Box Component Mounting Double Plug To Binding Posts



MATERIALS:

Binding Posts: Insulated. Brass, Alloy 360, ½ Hard.

Finish: Nickel plated

Insulation: Polycarbonate

Colors: Black and Red

Banana Plug Springs: Beryllium Copper, Cond. H.T.

Finish: Nickel plated

Banana Plug Bodies and Solder Turret Terminals: Brass, Alloy 360 ½ Hard.

Finish: Nickel plated per QQ-N-290 Class 2 (.0002/.0003)

Molded Housing: Electrical grade Phenolic. Color: Black

Marking: "MODEL 2259 POMONA ELECTRONICS CALIF."

Cover: Phenolic Plate. Color: Black

Screws: 2 ea. #2-56 x ¼" Pan HD. - Steel

RATINGS:

Operating Temperature: +115°C. (+239°F.) Max.

Current: 15 Amperes

ORDERING INFORMATION: Model 2259

All dimensions are in inches. Tolerances (except noted): .xx = ±.02" (.51 mm), .xxx = ±.005" (.127 mm).

All specifications are to the latest revisions. Specifications are subject to change without notice.

Registered trademarks are the property of their respective companies. Made in USA

Distribuido Por:

www.finaltest.com.mx

Calle del Ebano #16625

Tijuana B.C. Mexico

Tel. (664)681-1130

Tel. 01800 027-4848

ventas@final-test.net