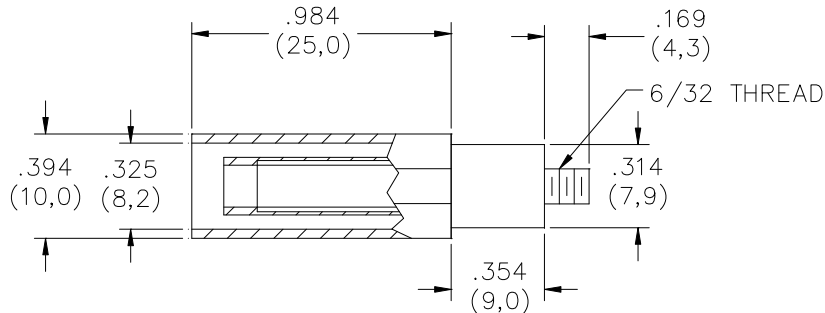


## Model 6720 Adapter, 6/32 Terminal Strip to Standard Sheath Banana Plug



### Features:

- ✓ Adapter provides an easy and quick banana jack connection by replacing the screw in a terminal strip.
- ✓ Allows a standard sheathed banana plug / patch cord to securely connect to a terminal strip.
- ✓ Helps to avoid accidental arc-over by eliminating the usage of alligator clips, or test probe “slip offs” during measurement applications.
- ✓ Ideal for routine measurements.

### Materials:

Banana Jack:	Nickel Plated Brass
Insulation:	Nylon 6

### Ratings:

Voltage:	600 Vrms; For <i>CE compliance</i> : not intended for hand held use at voltage above 33 Vrms / 70 Vdc.
Current:	20 A
Temperature:	-10 to +55 C
Torque:	7 In/Lb

### Ordering Information:

6720-0	Black
6720-2	Red

All dimensions are in inches. Tolerances (except noted): .xx =  $\pm .02$ " (.51 mm), .xxx =  $\pm .005$ " (.127 mm).  
All specifications are to the latest revisions. Specifications are subject to change without notice.  
Registered trademarks are the property of their respective companies. Made in USA

Distribuido Por:  
www.finaltest.com.mx  
Calle del Ebano #16625  
Tijuana B.C. Mexico  
Tel. (664)681-1130  
Tel. 01800 027-4848  
ventas@final-test.net

**FINAL TEST**<sup>MR</sup>  
Venta de Instrumentos de Prueba y Medición